

**Technical**

**Bulletin M2011001**

**MEGAsys**  
**Server for MS Server 2008 R2**  
**Technical Notes**  
**TN-207020117**  
**v1.0**

For MEGAsys GB/Big5/Eng Version

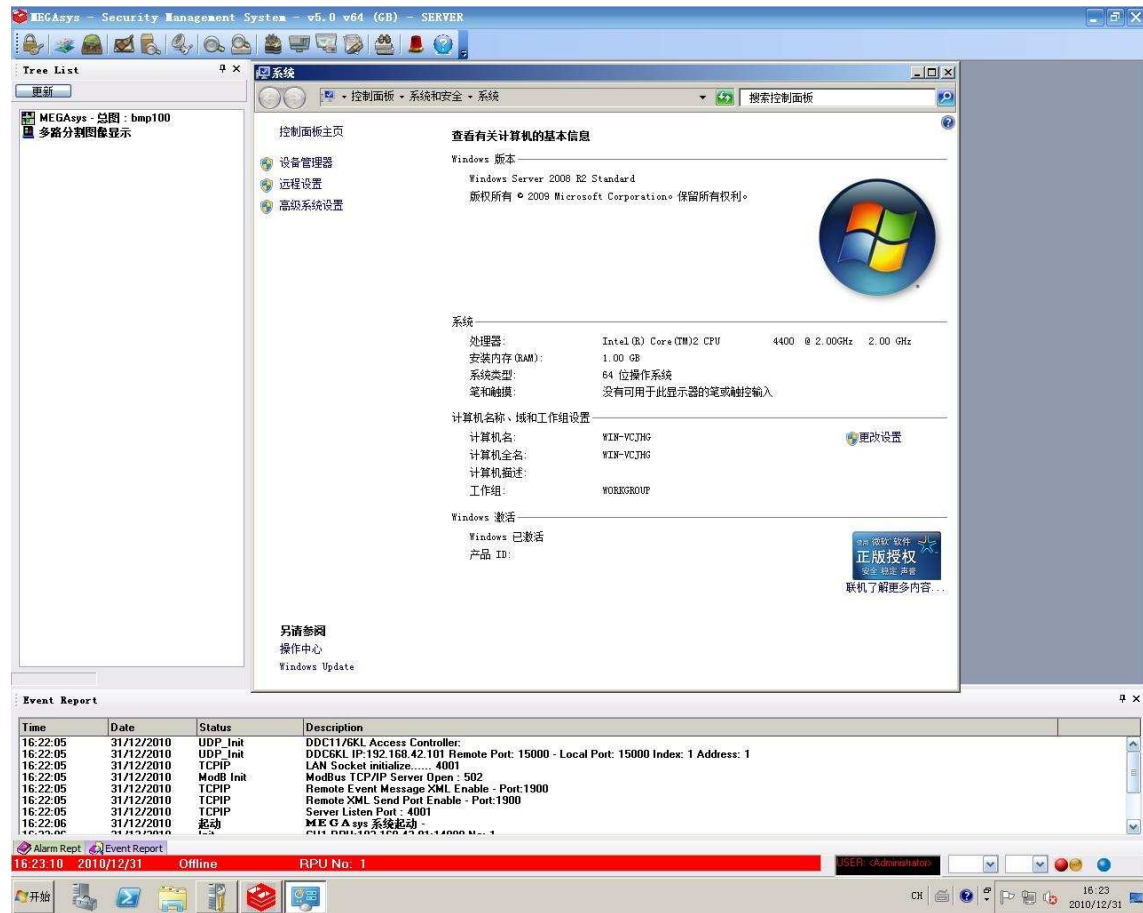
2011/01/01  
Evertch Electronics Ltd.

# MEGAsys GUI System – for MS Server 2008 R2 Platform

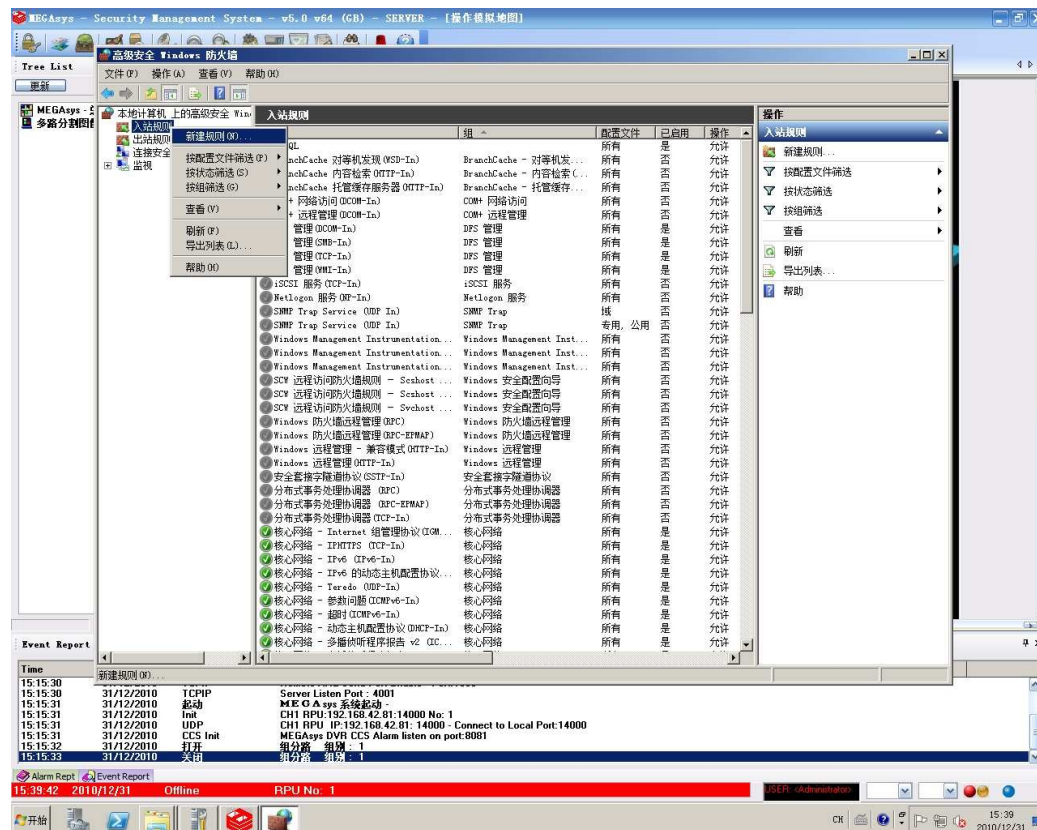
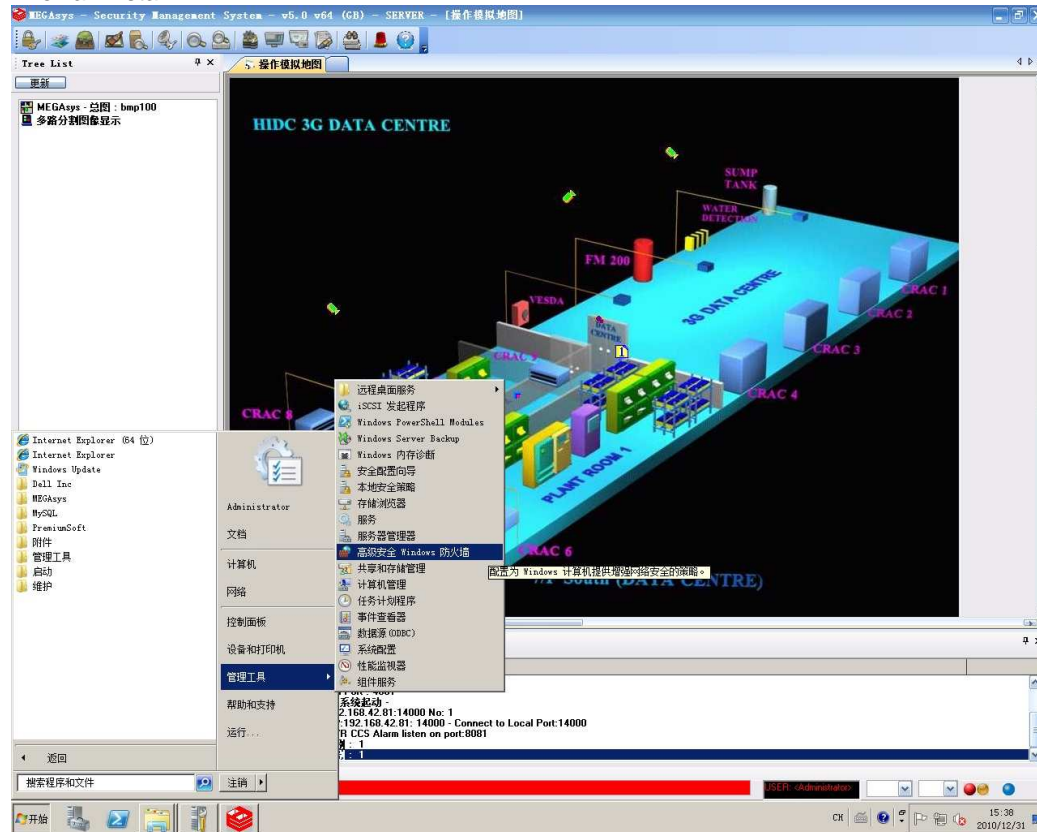
MEGAsys 可使用 MS Server 2008 R2 作 Server

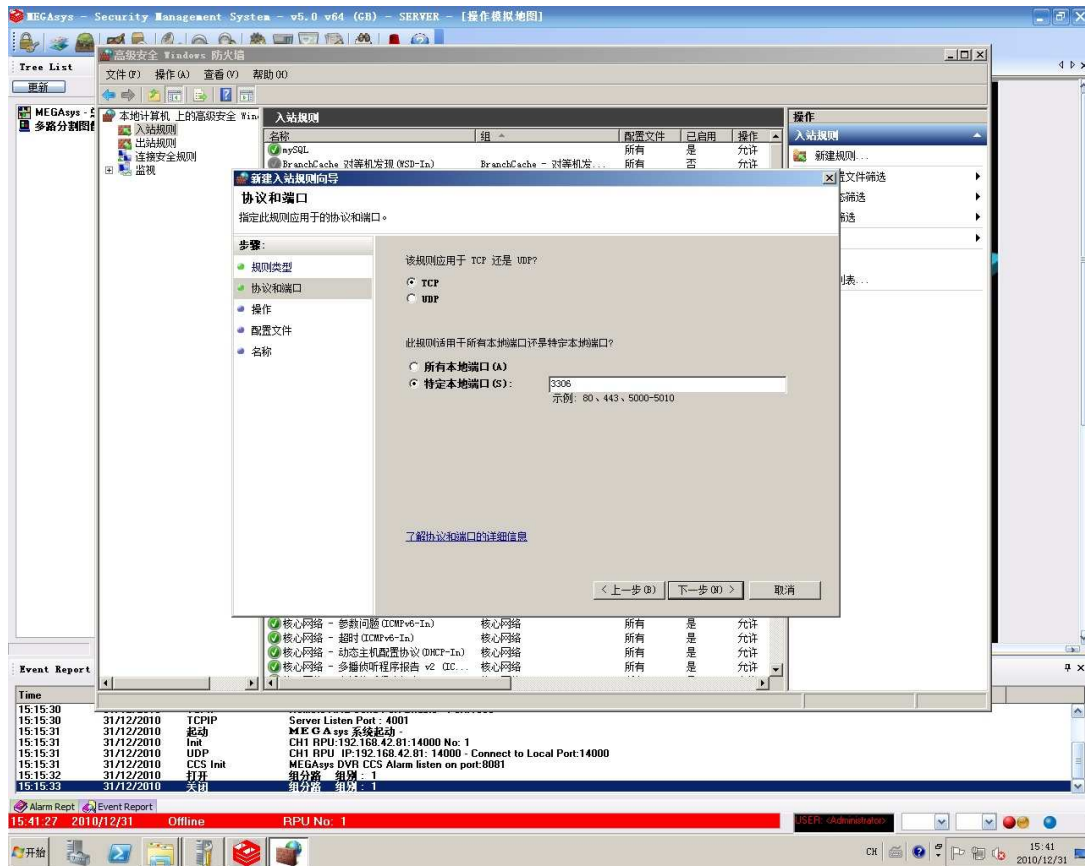
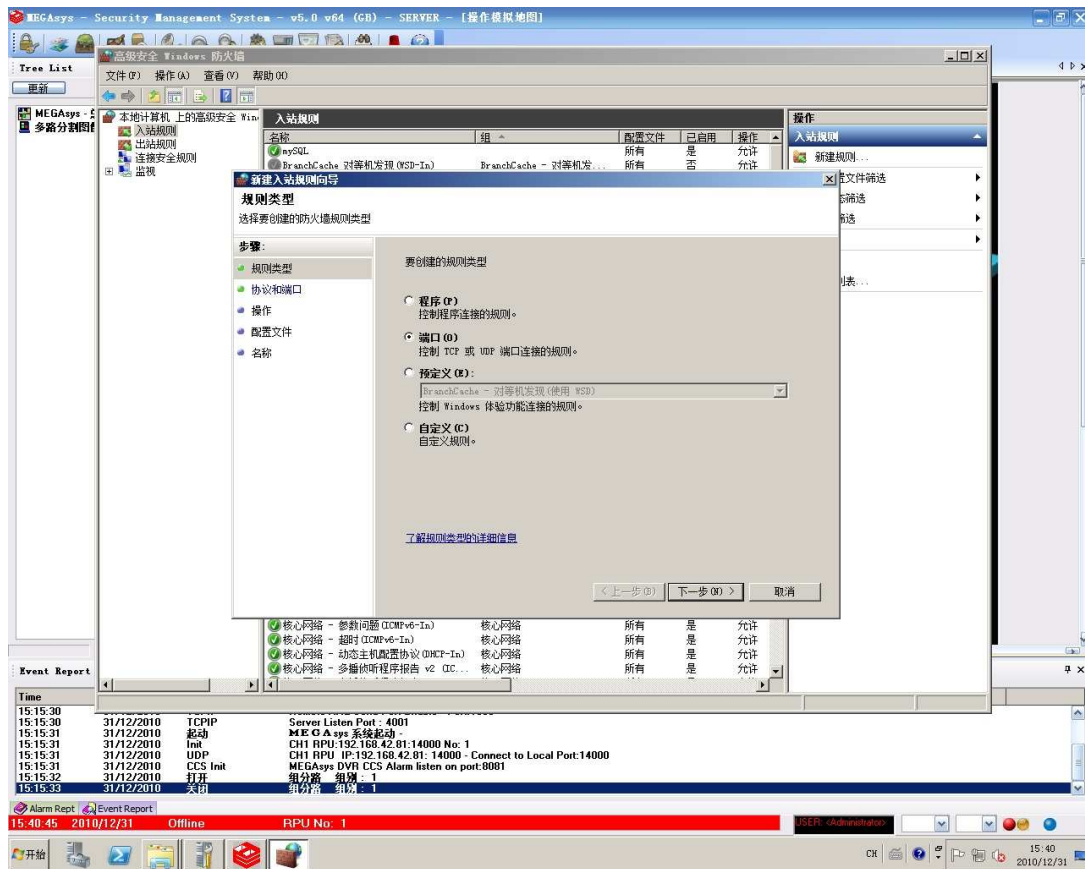
版本如下:

Windows Server 2008 R2 Standard - 64 Bits Version

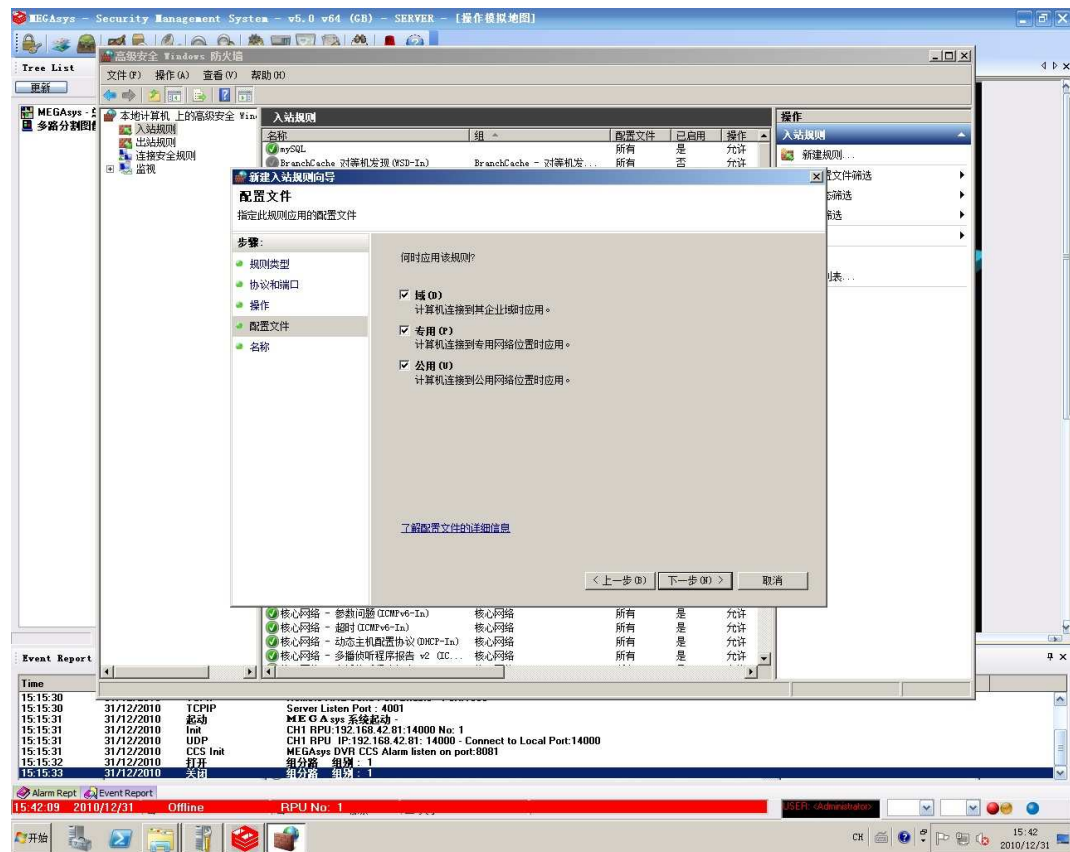
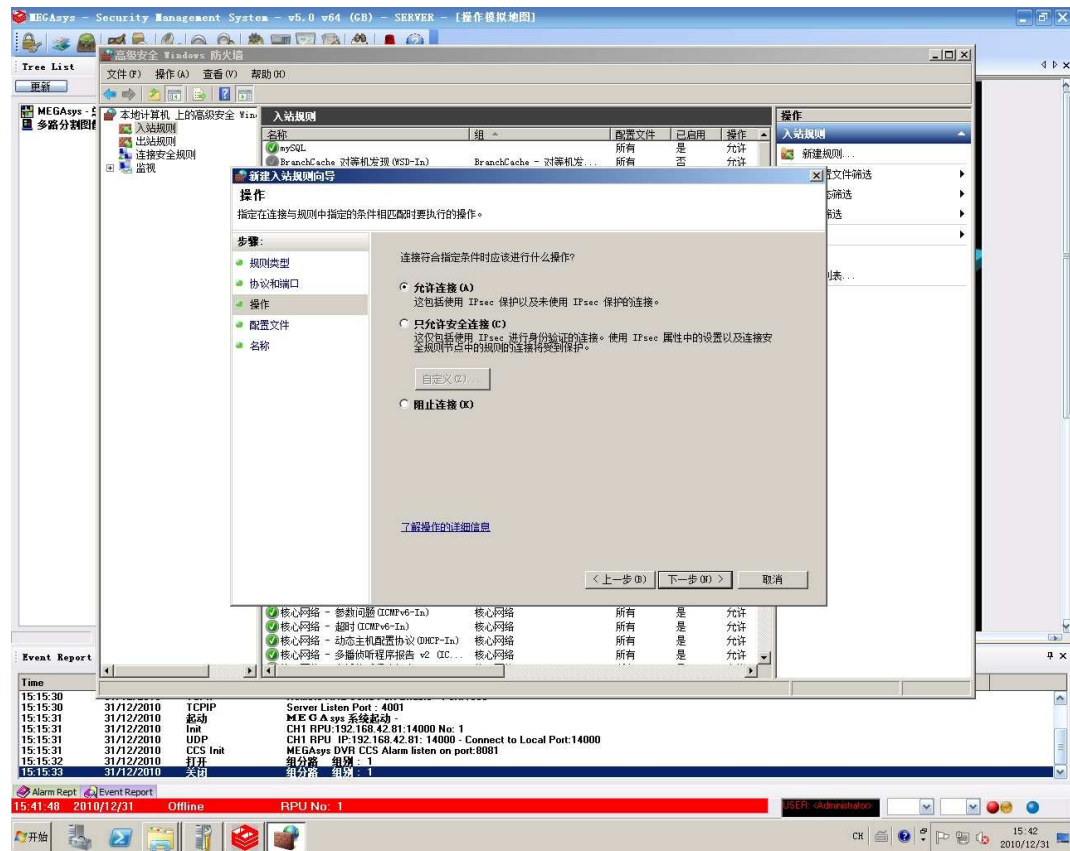


Firewall Install

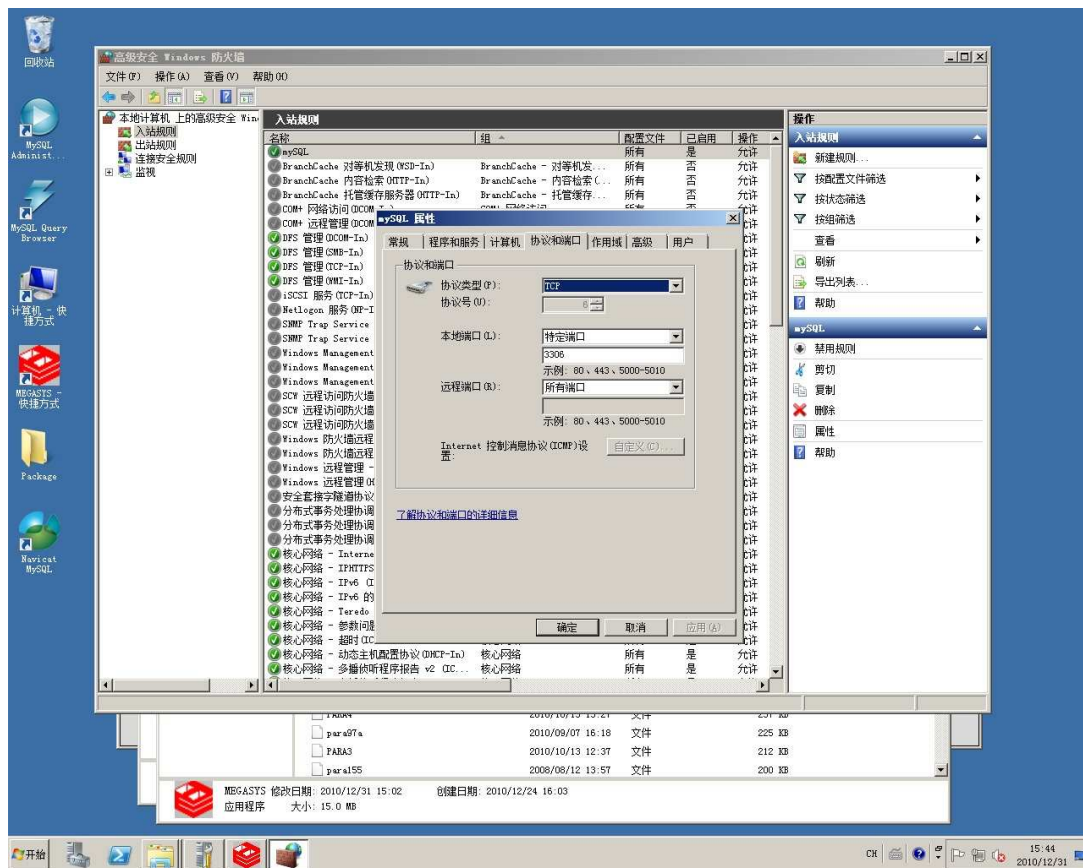
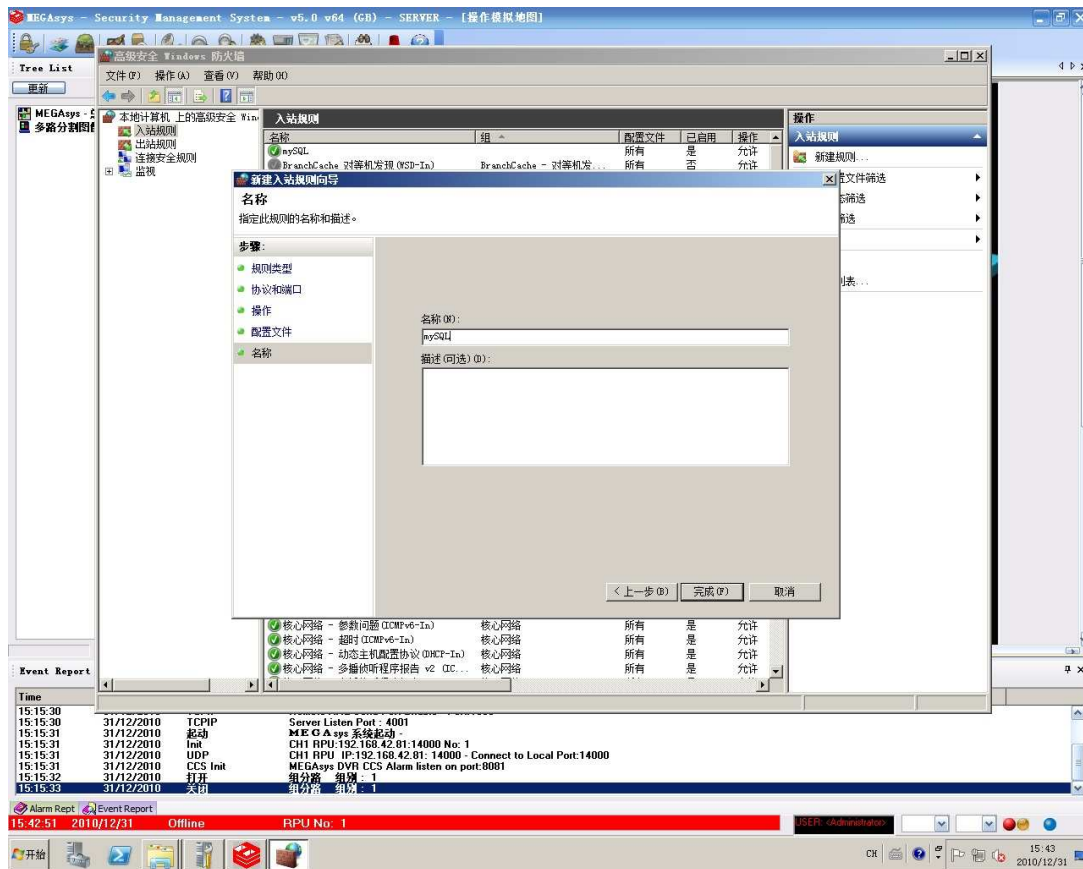




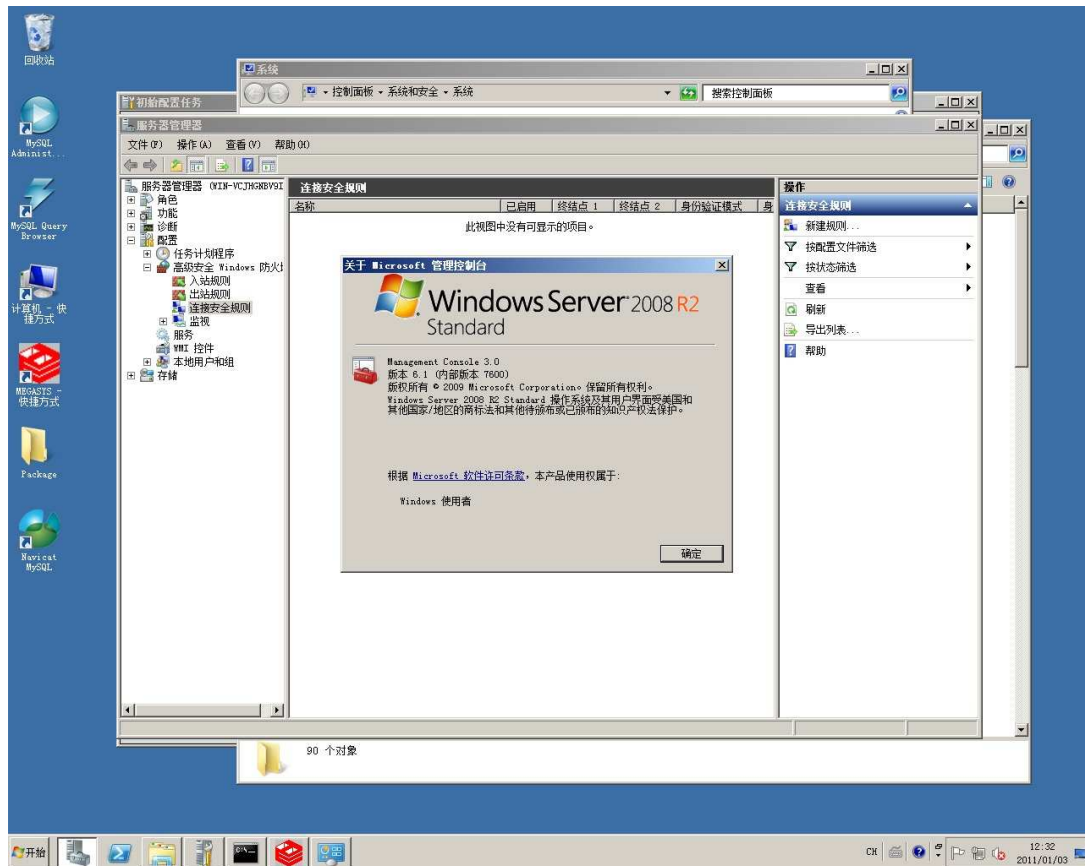
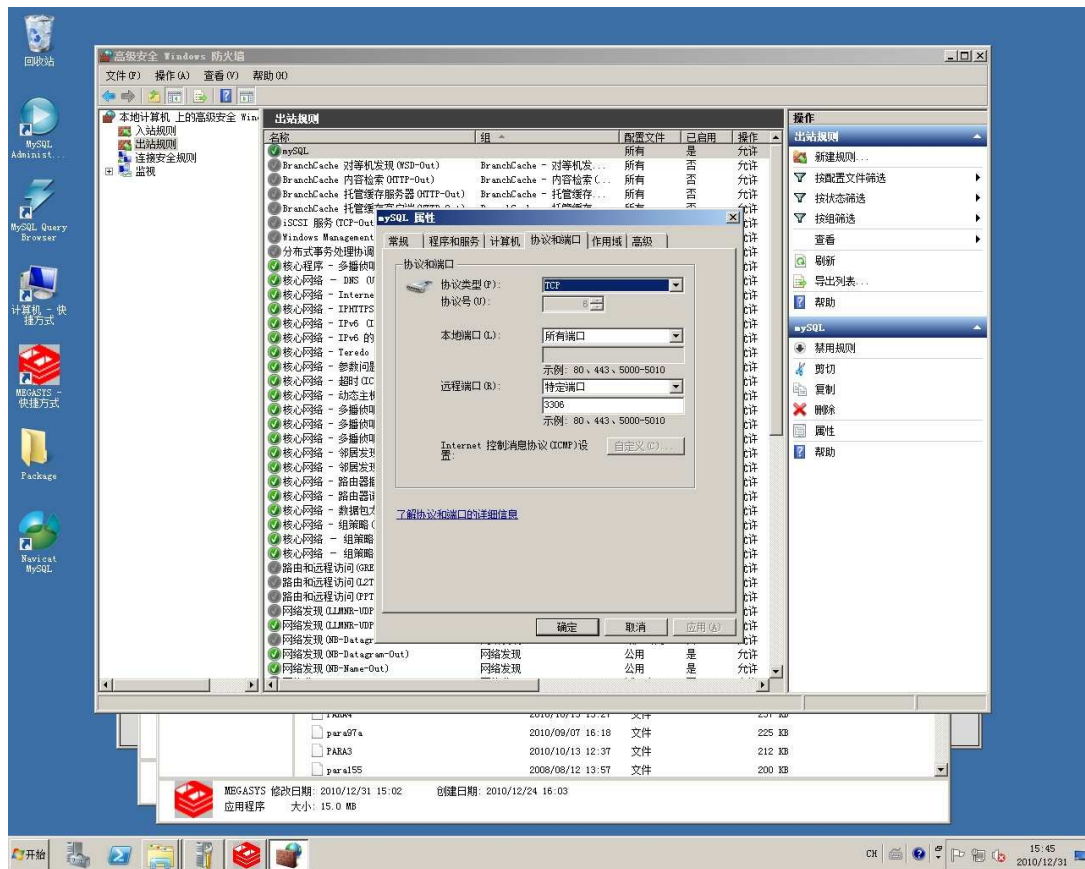
# MEGAsys GUI System – for MS Server 2008 R2 Platform



# MEGAsys GUI System – for MS Server 2008 R2 Platform



# MEGAsys GUI System – for MS Server 2008 R2 Platform



# MEGAsys GUI System – for MS Server 2008 R2 Platform

MEGAsys v5 r1.0

**Parameter**

- 摄像机参数编辑
- 监视器参数编辑
- 副控键盘授权控制参数编辑
- 任务使用列表
- 音频对讲机设定
- 输入设备参数编辑
- 输出设备参数编辑
- HA 设定
- 巡逻程序
- 事件时间控制
- 门禁控制参数
- 控制参数编辑
- 系统参数编辑
- 打印机设定
- 系统通讯
- 操作员等级授权
- 打印记录

**Tree List**

- MEGAsys - 总图: bmp100
  - BMP886
    - DVR Camera: 210.3.53.27
    - BMP886 - Input Zone: 000
    - BMP886 - Input Zone: 000
    - DVR Camera: 210.3.53.27
  - BMP887
    - DVR Camera: 59.124.97.7
    - DVR Camera: 59.124.97.7
    - DVR Camera: 59.124.97.7
    - DVR Camera: 59.124.97.7
  - 多路分割图像显示
    - ET

**System Version**

MEGAsys Security Management System.  
Web: www.megasys.com.hk  
Ver 5.00 - 10.2010.10.10050102.r1.0 - 32 bit  
Copyright, 1988-2010 Eveitech Electronics Ltd.

Email: admin@megasys.com.hk  
MEGAsys IP:192.168.42.238 - WIN-VCIHG8NBV90  
mySQL Server IP:127.0.0.1 Database Name: megasys  
User: root

DirectX Version Required:  
Version Installed: 9.4

Sys Info  
INI

**DVR Remote** : 59.124.97.72:9192-02

重放 转台控制 拍摄 四分割 品质 帧比率 录影 位移侦测 Intercom  
DVR录影控制 停止  
插建 2 2011/01/03 13:18:51

**Event Report**

Time	Date	Status	Description
11:54:34	03/01/2011	TCP/IP	Remote XML Send Port Enable - Port:1900
11:54:34	03/01/2011	TCP/IP	Server Listen Port: 4001
11:54:35	03/01/2011	启动	MEGAsys 系统启动
11:54:35	03/01/2011	Ink	CH1 RPU:192.168.42.81:14000 No: 1
11:54:35	03/01/2011	UDP	CH1 RPU IP:192.168.42.81:14000 - Connect to Local Port:14000
11:54:35	03/01/2011	CCS Init	MEGAsys DVR CCS Alarm listen on port:8081
11:54:36	03/01/2011	打开	组分割 组别: 1
11:54:37	03/01/2011	关闭	组分割 组别: 1

Alarm Rept. Event Report  
12:55:52 2011/01/03 Offline RPU No. 1 USER: Administrator

开始 12:55 2011/01/03